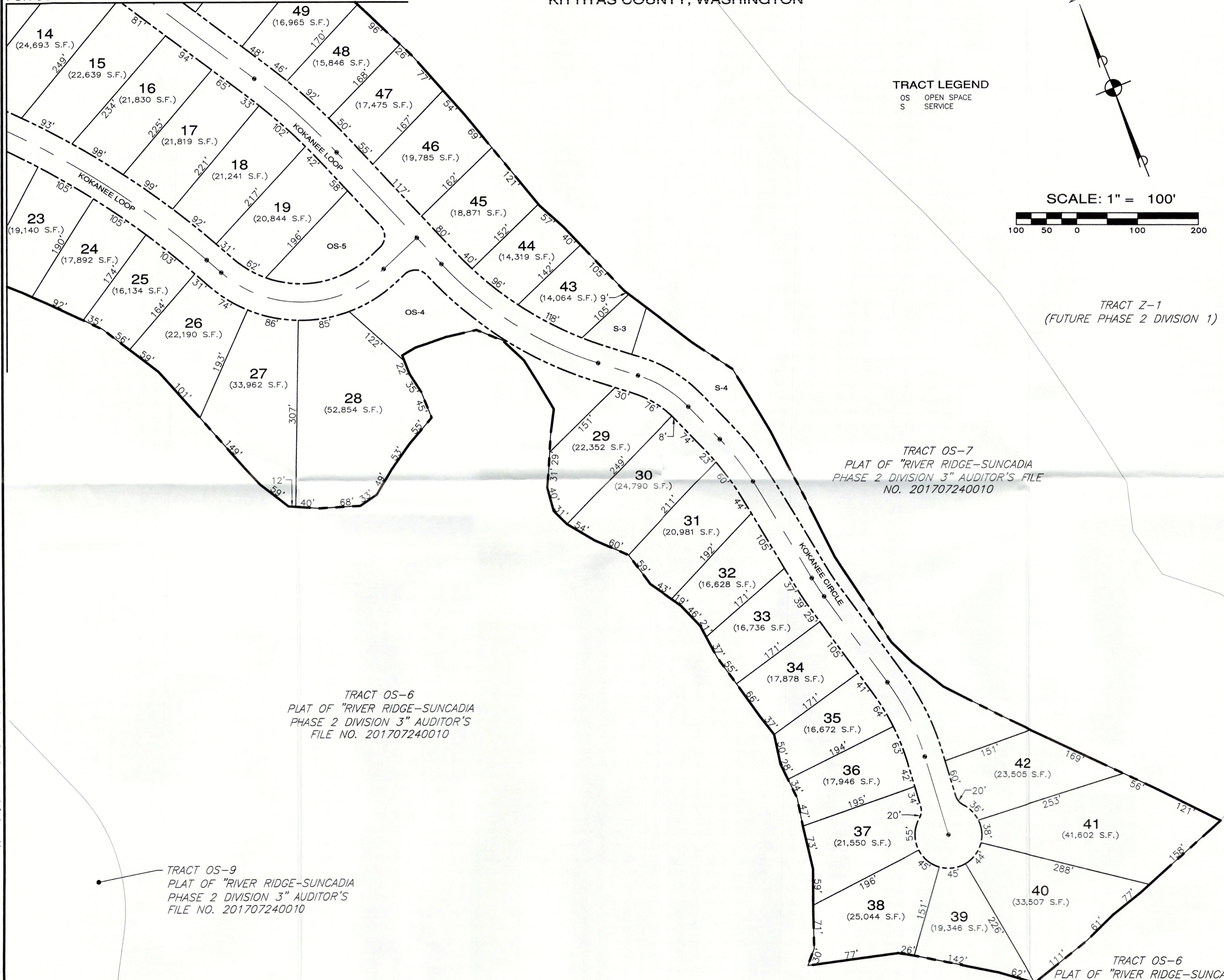
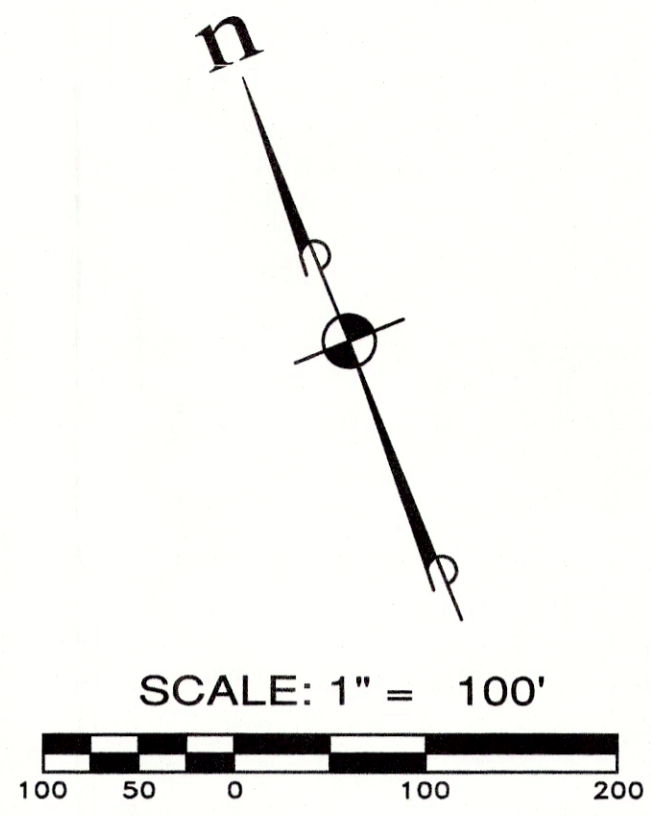


FOR CONTINUATION - SEE SHEET PP-02

A PORTION OF SECTIONS 18 AND 19, TWP. 20 N., RGE., 15 E., W.M.,
KITITAS COUNTY, WASHINGTON



TRACT LEGEND
OS OPEN SPACE
S SERVICE



TRACT Z-1
(FUTURE PHASE 2 DIVISION 1)

TRACT OS-7
PLAT OF "RIVER RIDGE-SUNCADIA
PHASE 2 DIVISION 3" AUDITOR'S FILE
NO. 201707240010

TRACT OS-6
PLAT OF "RIVER RIDGE-SUNCADIA
PHASE 2 DIVISION 3" AUDITOR'S
FILE NO. 201707240010

TRACT OS-9
PLAT OF "RIVER RIDGE-SUNCADIA
PHASE 2 DIVISION 3" AUDITOR'S
FILE NO. 201707240010

TRACT OS-6
PLAT OF "RIVER RIDGE-SUNCADIA
PHASE 2 DIVISION 3" AUDITOR'S
FILE NO. 201707240010

REVISIONS		
NO.	DESCRIPTION/DATE	BY

ESM CONSULTING ENGINEERS LLC
 33400 8th Ave S, Suite 205
 Federal Way, WA 98003
 (206) 834-8113
 (206) 297-9800
 www.esmcivil.com
 Civil Engineering Public Works
 Land Surveying Project Management
 Land Planning Landscape Architecture

NEW SUNCADIA LLC
 SUNCADIA PHASE 2 DIVISION 5
 (RIVER RIDGE II)
 PRELIMINARY PLAT
 WASHINGTON
 KITITAS COUNTY

JOB NO.:	998-773-018
DWG. NAME:	PP-03
DESIGNED BY:	JUH
DRAWN BY:	LGB
CHECKED BY:	
DATE:	01/21/2019
PRINT DATE:	
SHEET	
PP-03	

Plotted: 1/23/2019 1:53 PM
File: \\esmb\engr\ESM-JOB5\998\773\018\PP-plot\Plots\PP-03.dwg